

Entomology Graduate Student Handbook



The UMD ENTM Graduate Student Handbook, sponsored by the ESO, is written for the students by the students. It includes University and Department regulations, as well as tips and tricks to help you navigate your graduate years at UMD!

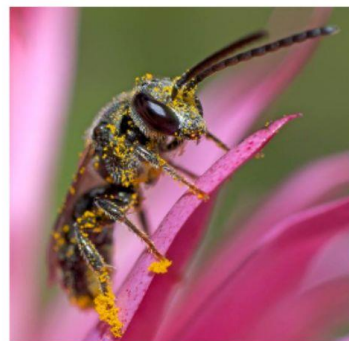
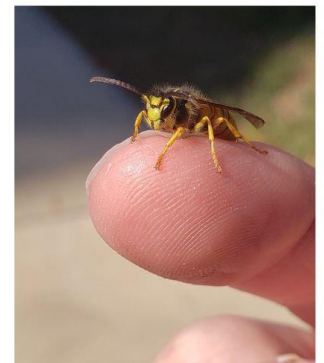


Table of Contents

[IMPORTANT WEBSITES –..... 4](#)

[ENTOMOLOGY DEPARTMENT STAFF – 5](#)

[MASTERS REQUIREMENTS – 9](#)

[PHD REQUIREMENTS –..... 10](#)

[GRADUATION TIMELINE – 12](#)

[COURSE OFFERINGS – 13](#)

[THESIS SUBMISSION –..... 16](#)

[TEACHING ASSISTANTSHIPS – \(TAS\) 18](#)

[RESEARCH ASSISTANTSHIPS – \(RAS\) 18](#)

[UNIVERSITY AND DEPARTMENT FELLOWSHIPS AND FUNDING –..... 19](#)

[CONFERENCES – 20](#)

[DEPARTMENT AND CAMPUS RESOURCES –..... 22](#)

[HUMAN RESOURCES, EARNINGS STATEMENTS, AND BILLING STATEMENTS 24](#)

[SAFETY & WELL-BEING – 25](#)

[LIFE AROUND CAMPUS –..... 30](#)

[TRANSPORTATION AND HOUSING – 34](#)



About the ESO –

The Entomology Student Organization (ESO) is a non-profit organization established for the advancement and recognition of Entomology graduate students at the University of Maryland. Through its Constitution and By-Laws, it “secures and protects the rights of all graduate students within the department.”

These rights are established as an executive governing committee made up of a six officer positions: President (i.e. Faculty Representative), Vice President, Treasurer, Social Chair, Communications Officer and Undergraduate Representative.

These elected officers are responsible for all duties of the ESO, including informing students of changes to departmental and university policy, distribution of departmental awards, and the planning and execution of department fundraisers and social events.



All graduate students with an advisor affiliated with the Department of Entomology are members of the ESO. Elections are held every spring and all students within the department can be nominated by someone else or self-nominated. The responsibilities of each officer can be found on the ESO website!

Important Websites –

- [ESO website](#)
- [ELMS](#): Course platform
- [Testudo](#): Office of the Registrar. Used for course registration, managing financial status, transcript requests, and much more.
- [Department of Transportation Services \(DOTS\)](#): Purchase parking permits, pay citations & shuttle schedules
- [Bursar's office](#): Breakdown of tuition and fees
- [University of Maryland Libraries](#): Database resources, information on physical libraries on campus
- [University of Maryland Research Commons](#): Get the most out of UMD libraries. Learn about citation managers & statistics software
- [Campus map](#): This interactive map is great for navigating campus, and contains a campus plant inventory
- [Campus Calendar](#): This calendar outlines most major events coming up across the university.
- [Department DEI Resources Page](#)
- [Resources for student employees with disabilities at UMD](#): Lasair ni Choclain (lasair@umd.edu), an Entomology PhD student, compiled UMD's existing disability resources along with some new ones that they created.
- [Accommodations How-To Guide](#): A document made by a UMD undergraduate on how to navigate UMD ADS.

Entomology Department Staff –

The department prides itself on our friendly and supportive workplace culture. Don't hesitate to contact our incredible faculty and staff.

Leslie Pick: Department Chair.

Jeff Shultz: Graduate Program Director.

Amy Yaich: Program Administrative Specialist.

Amy oversees deliveries and pickups, department conference rooms, master and supply keys, electronic resources, the Green Office program, colloquium, parking permits for faculty and staff, departmental news (newsletter, web and social media presence), the department directory and e-mail reflectors.

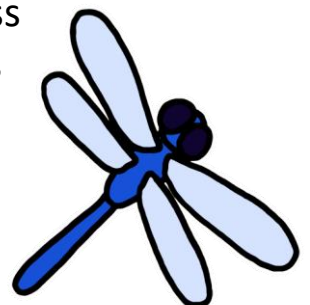


Andy Yeh: Coordinator of Research & Graduate Studies.

Responsible for budget preparation; graduate student recruitment, course registration, and more. Ask Andy your questions regarding degree requirements, registration procedures and policies, forms, etc.

Pam Biery: Business Manager – Payroll . Pam covers payroll and benefits. Hiring a new technician? Having an issue with getting paid or your health insurance? Going on a conference or research related trip? Talk to Pam!

Debbie Thompson: Director of Finance. Based in the business office, Debbie manages reimbursements and large purchases (i.e. those that exceed Pcard limits).



Sydney Wallace: Greenhouse Manager.

Greg Hess: IT Systems Manager.

Greg oversees computing, maintains the computer lab's computers, and gives IT assistance. If you've got a problem, email him at greghess@umd.edu.

Todd Waters: Agricultural Technician Supervisor

Todd is the go-to person for lab safety and equipment (ie autoclave) training, and manages both the shared equipment lab and insect zoo.

Shaun Faulkner: Shaun is the main point person for issues/emergency situations with building facilities in the department. This includes autoclave and walk-in fridge and freezer problems. This [list](#) can help you decide if you should contact Todd or Shaun for a specific need.

Roshanna Howell Accounting Associate.

Michael Katsereles: Business Manager.

Joeleen Grant-Paterniti: Contract Administrator with ORA (Office of Research Administration). Andy is the point of contact for Joeleen/ORAs.



Degree Requirements –

The most up-to-date MS and PhD degree requirements are on the department website. The [Graduate Student Resources](#) page has additional information, and [U.achieve](#) (with the corresponding [U.achieve guide](#)) is a tool to track your progress towards your degree! If you have questions, ask Andy Yeh in the ENTM administrative office.



Masters Requirements –

M.S. students are required to complete 30 credits of coursework. Both the Graduate School and Entomology Department require 6 of these credits to be thesis research credits (ENTM799), 12 credits to be at the 600 level or higher, and 12 of these credits related to your research interests as dictated by the program/committee. The committee is made up of 3 members, including the advisor (for more info, see section: Research Committee). For MS students, the ENTM Department guarantees 3 years of funding.

Course Requirements

Two mandatory, 4-credit core courses: BSCI481: Insect Diversity and Classification and BSCI482:

Insect Physiology and Molecular Biology. Additionally, three topic one-credit topic seminars are required. Topic seminars can be taken in any department as relating to the area of study, however, one of which one must be Bioethics (BSCI712). Every semester students must register for Special Topics: Colloquium (ENTM788C). However, this does not count towards the topic seminars requirement. All student who will be a teaching assistant (TA) are also required to take Effective Teaching and Professional Development (ENTM701).

M.S. Requirements (30 total credits)

≥6 credits of 799 (thesis research)

≥12 credits of level 600 or higher

3 topic seminars (1 credit each), including Bioethics (BSCI712)

BSCI481: Insect Diversity and Classification (4 credits)

BSCI482: Insect Physiology and Molecular Biology (4 credits)

ENTM701 Effective Teaching *IF* you TA (1 credit; does not fulfill topic seminars)

ENTM788C Special Topics: Colloquium (required every semester; 1 credit; does not fulfill topic seminars)

PhD Requirements –

Ph.D. students are required to complete 40 credits of coursework to graduate. The Graduate School and the Entomology Department requires that 12 of these be dissertation credits (ENTM 899). After reaching candidacy, students will automatically be signed up for 6 dissertation credits every semester until you graduate. The committee is made up of 5 members, including the advisor and a Dean’s representative (see Research Committee for more information). For PhD students, the ENTM Department guarantees 5 years of funding.

Course requirements

There are three required, 4-credit, core courses for Ph.D. students: BSCI480 Arthropod Form and Function, BSCI481 Insect Diversity and Classification, and BSCI482 Insect Physiology and Molecular Biology.

Additionally, five topic seminars are required. Topic seminars can be taken in any department as relating to the area of study, however, one of which one must be Bioethics (BSCI712).

Ph.D. Requirements (40 total credits)

≥12 credits of 899 (dissertation research)

BSCI480: Arthropod Form and Function (4 credits)

BSCI481: Insect Diversity and Classification (4 credits)

BSCI482: Insect Physiology and Molecular Biology (4 credits)

5 topic seminars (1 credit each; ENTM 798 or others in various departments), including Bioethics (BSCI712)

ENTM701 Effective Teaching *IF* you TA (1 credit; does not fulfill topic seminars)

ENTM788C Special Topics: Colloquium (required every semester until candidacy; 1 credit; does not fulfill topic seminars)

Every semester students must register for Special Topics: Colloquium (ENTM788C). However, this does not count towards the topic seminars requirement. PhD students are not required to register for Colloquium (ENTM788) after completing their qualifying exam and reach candidacy status. All student TA's are required to take Effective Teaching and Professional Development (ENTM701).

Full-time Enrollment

The Graduate School uses a unit system to determine full-time or part-time student status. Please note that graduate units are different from credit hours. **To be certified as full time, a graduate student must be officially registered for a combination of courses and assistantships equivalent to 48 units per semester.** You can find all the necessary information (including a handy conversion chart) on [Academic catalogs](#).

Although tuition generally covers 10 credits, **taking over 8 credits will result in a steep increase in fees (which must be payed by the student!!)** For 1-8 credits, [the current fee](#) is \$331.50, and for 9 or more credits, the fee is \$641.50. Fees can be found at the bursar's tuition breakdown. **To avoid paying the increased fees, do not enroll in more than 8 credits per semester!**

You need sufficient units to maintain full-time status, and you need sufficient credits to ensure that you are making appropriate progress toward the minimum requirements for your degree. Credits do not in any way determine full- or part-time status. It is important for MS students to know that extra ENTM799 credits – beyond the 6 required cannot be used to fulfill other requirements (e.g. electives, seminars, etc.). Students on fellowships should touch base with Andy Yeh.





Research Committee

It is recommended to begin organizing a committee during your first year. Ideally, students want to select a committee based upon their area of research, ultimately with advice from the supervisor. The committee's role is to review your research proposal for your thesis and provide advice and academic support where needed. Ask Andy Yeh about the paperwork associated with the first committee meeting. After establishing a committee, you are required to meet annually to update the committee on your progress.

M.S. students require a minimum of 3 committee members, one of which will be the advisor. Ph.D. students require a minimum of 5 committee members, one of which will be the advisor. At least 2 (including the advisor) must be within the Entomology Department, and one will serve as the Dean's representative which must be from a different department on the UMD College Park campus.

Because of our optimal location in the D.C. area, there are many institutes where you may be able to find committee members or collaborators, such as USDA, USGS, NIH and the Smithsonian, and other universities like Georgetown, George Mason University, and University of Maryland Baltimore County. These off-campus individuals must be nominated and approved as Special Members of the Graduate Faculty before they can become official members of your committee.

Graduation Timeline –

The Department website offers suggested deadlines to help students stay on track with their degree. The Department requires each student to submit an annual progress report. This will include information about any presentations, publications, grants, classes, volunteer work, meetings with the committee, and other benchmarks for the department to keep track of your progress and contributions.



Course Offerings –

To see and register for courses, go to the [Testudo schedule of classes](#). Through Testudo you can view courses offered by ENTM, BSCI, BEES, BIOL, BIOM, BISI, ENST, MEES, GEOG, and PLSC. You can take courses in any department where an applicable class is found and for the inside scoop on courses, ask older grad students!

Core ENTM courses

BSCI481 (Insect Diversity and Classification) is offered every fall and is *required for all graduate students*. The course requires an insect collection and so it is worthwhile to begin collecting as soon as you can! It is taught by Dr. Jeff Shultz.

BSCI482 (Insect Physiology and Molecular Biology) is offered during Fall of odd-numbered years (e.g. 2023, 2025, etc.) and is *required for all graduate students*.

BSCI480 (Form & Function) is only offered during Spring of even-numbered years (e.g. 2022, 2024, etc.), and is *required for all PhD students*. It is taught by Dr. Jeff Shultz.

Additional ENTM courses

- BSCI467 - Freshwater Biology
- BSCI483 - Insects, Pathogens, and Public Health
- BSCI494 - Animal-Plant Interactions
- BSCI497 - Insect Pests of Ornamentals and Turf



Topic Seminars

Seminars are offered sporadically and change from semester to semester. If there is a topic you'd be interested in, you are encouraged to ask around regarding interest and request someone(s) to teach it. You can also pursue leading a seminar yourself in a topic that particularly interests you. With approval of the committee, seminar courses in other departments can be taken.

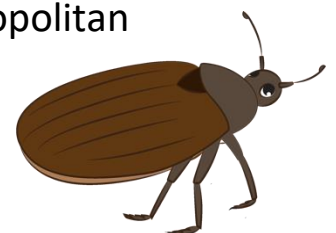
Statistics

Two common statistics courses include Statistics and Modeling for Biologists (BIOL705) offered by the Biology Department and Data Wrangling and Visualization in R (PLSC489R) offered by the Plant Sciences Department. Other statistics courses include BIOM601 (introductory statistics course), BIOM602 (experimental design course), BIOM603 (regression statistics course), and BIOM621 (multivariate statistics course).

Make note that BIOL705 and PLSC489R is taught in R, while, BIOM601 and BIOM602 are taught in SAS. The MEES program also offers two classes in R, taught remotely through the Interactive Video Network (IVN). MEES698B (fall) covers introductory statistics and experimental design while MEES708M (spring) is a course in time series and spatial analysis. The UMD library also offers [R workshops!](#)

University System of Maryland (USM) courses

Courses taught at other USM institutions (aka Appalachian Lab, UMCES, etc.) are sometimes available through the Interactive Video Network (IVN). Course listings in the course schedule should specify if they'll be on IVN. The [Washington Consortium](#) also allows students to take courses in eligible universities in the Washington DC Metropolitan Area.



Teaching

If you are interested in pursuing teaching in the future, the Teaching and Learning Transformation Center ([TLTC](#)) offers a program called the University Teaching and Learning Program (UTLP). By meeting a few requirements, you can gain formal instruction in teaching. Find more information on the program [here](#). The TLTC also has many other resources, workshops, and programs, including a new peer teaching observation network, help with building a teaching portfolio.

Broadening Experience

A semester-long Broadening Experience (ENTM788: Entomological Topics) may substitute for one topic seminar. The Broadening Experience is an opportunity for a student to join the lab of an ENTM faculty member other than their major advisor for one semester in order to acquire new research skills and perspectives. The Broadening Experience should be completed prior to candidacy.

Adding/Dropping Courses, and Transcripts

These are things handled by the Registrar's [website](#). Clicking on 'Registration (Drop/Add)' will take you to a page showing your current enrollment, including the [schedule of classes](#). If dropping a course after the drop/add date, speak to Andy Yeh to avoid significant fees.

Unofficial and official transcripts are also available through the Registrar's website. Official transcripts are free when delivered electronically or if you want a single paper copy. Additional paper copies are \$8 each.



Thesis Submission –

Ph.D. students must submit extra forms during the thesis submission process, including taking a qualifying exam. This will be discussed with the committee, and it is generally taken in the 4th or 5th semester of residence. Doctoral students are required to take qualifying exams and advance to candidacy within five years and must then finish the degree within another four years. This can be granted some exceptions.

Master's students are expected to complete the entire degree within five years, but most take 2-3 years.

When nearing graduation, it's important to check deadlines for that semester. For example, there are specific dates that must be met for declaring graduation, submitting the final thesis/dissertation, and other forms. Additionally, there are specific format requirements for the thesis/dissertation. When nearing completion, the thesis/dissertation must be presented at a seminar to the department and then defended to the committee. The thesis must be sent to the committee 10 in advance of the defense date.





Teaching Assistantships – (TAs)

As a new TA, you will likely be teaching the lab section to an intro Bio course. Unfortunately, there are very few ENTM courses that require TAs. Many ENTM students are half-time TAs, with the remainder of their funding coming from fellowships or grants. Students can sometimes request a course, but it varies as to whether you are assigned the requested course. Responsibilities can vary between different courses

Research Assistantships – (RAs)

Research assistantships are dependent on available funding from your advisor. These can be full or half-time sources of funding.



University and Department Fellowships and Funding –

Gahan Fellowships

The Gahan fellowship is funding specific to the Entomology department. To learn more about its history and Arthur Gahan, check the website ([LINK](#)). Please note that eligibility guidelines are out of date. In recent years Gahan awards have been given to both Masters and PhD students and applications are not currently required.

Graduate School Fellowships

The UMD Graduate School offers a variety of [fellowships](#), including two travel awards from the Graduate School. [The Jacob K. Goldhaber award](#) is a matching grant that supports national and international travel. PhD students are eligible to receive the Goldhaber award twice (once pre- and once post-candidacy), while masters students may apply once. The ICSSA covers the registration fee for international travel (up to \$500).



ESO Awards

There are [two awards](#) given to ENTM grad students through ESO: the Charlie Mitter Travel Award and the “Get Bugged” Raupp Extension Award. The Charlie Mitter Travel Award provide students with financial aid for traveling relating to conferences. The “Get Bugged” Raupp Extension Award is available to students who are involved in extension and outreach. Check out the [ESO website](#) for how to apply!

Outside Funding Sources



There are myriad outside funding sources available to graduate students. Many major grants are specific to your discipline or identity, and academic status (pre- and post- candidacy). Keep in mind that if you receive funding from an external (and some internal) funds that are strictly defined as fellowships, you may not be eligible for UMD Employee benefits.

One of the most well-known grants is the National Science Foundation's Graduate Research Fellowship Program (NSF GRFP). The prestigious fellowship pays your tuition and living expenses for 3 years. Recipients receive \$37,000 annually for each of the 3 years, and UMD receives \$11,000 annually for the same period to cover your tuition. Eligibility often changes, so check [their website](#) for updates. Students in the department have also successfully applied to the [North Eastern SARE graduate student grants](#), [Cosmos foundation](#), [UMD sustainability fund](#), and Maryland Department of Agriculture. Check out the [ESO website](#) for a list of outside grants!



Conferences –

Conferences are an excellent opportunity for networking and professional development [The Entomological Society of America](#) (ESA) annual meeting is commonly attended by the department; others include the [Ecological Society of America](#) and [Society for Freshwater Sciences](#).

The ESA national meeting occurs every fall and the Eastern Branch meeting is in the spring. See the website for updated student registration costs. As a student, you can also participate in the Entomology Games, an entomology trivia contest for students held at

ESA. If you're interested in organizing practices, or even just participating, be sure to reach out to the grad student body! For added incentive, winners receive a significant monetary prize put towards attending future meetings. From 2018 to 2022, our team did well enough to advance to the Games at the [ESA National Meeting!](#)

Advisors are often willing to pay conference costs, including registration fees, travel, accommodation, and meals. Before traveling, a travel expense form (available in the business office) must be submitted to Pam Biery in the administration office before leaving, and reimbursement will occur post turning in your receipts.

The ESO and Graduate school offers travel funding, including the [Charlie Mitter Travel Award](#). You may also be able to get all or part of the registration fees waived by volunteering at the meeting.



Department and Campus Resources –

Online Resources:

Directory ID and Passphrase

Your directory ID and passphrase will be your online login information for basically everything UMD-related, from library websites to your payroll info. Your directory ID will also be the basis for your UMD email address, so choose wisely (i.e. murderhornet@umd.edu might raise some eyebrows). To set these up for the very first time, go [here](#). Every 365 days, students will have to updated the passphrase.

Email

Once you've created a directory ID and password, you can activate your UMD email. For more info check out the IT support website [here](#).



Personal Websites

An online presence is increasingly important in science these days. Creating a personal research website, with interests, a research statement, description of projects, and CV is a great way for grad students to start curating their online presence. One website creation tool, Weebly, is free, compatible with the Entomology Department's website, endorsed by UMD, and it is easy to use. Contact [Amy](#) to have a link to it installed in the Departmental site.

Database/ Journal Searching

Publication databases are available through UMD's [Research Port](#). UMD Libraries has developed LibX that can be added to your internet browser to give you access to publications that are part of the UMD Library catalog. You can install LibX [here](#).

Wireless Internet

UMD uses Eduroam which is a secure network that you can find at many USM institutions (not just at the College Park campus), and even universities abroad! To login you need your full UMD email address and password. More info is available [here](#).

Computers and Software

UMD has used its clout to get discounts and extended warranties for faculty, staff, and students on certain Dell and Apple computers. For more information, visit the [Terrapin Tech Store](#) or stop by the physical store in McKeldin Library room 1221. Operating systems, Microsoft Office, data analysis software (Matlab, SAS, SPSS, JMP, etc.), design software (Photoshop, Illustrator, etc.), and more are available for free online through [terpware](#). If you need massive computational power, one option is UMD's computer cluster [Deepthought2](#).

Printing, - Graphics Lab (PLS 4137) & Copy Room (PLS 4122)

To gain access to the Graphics Lab, contact [Roshanna Howell](#) in the business office. This includes access to printers, scanners. To connect to the Lab's printers from your own machine for the first time, you'll need to have [Greg Hess](#) (Departmental IT Guy). The [Terrapin Learning Commons Center](#) in the McKeldin Library offers a large-scale printing service for color and poster printing). There are also printing kiosks around campus. [Terrapin Works](#) is where you need to go for prototyping, 3D printing, and digital design (for your project or just for fun!). Terpworks is part of the greater [Maker Space](#) network for "tryables" and "hackables."

Backup, Storage, and Sharing Files

UMD offers 50 GB of free file storing/sharing space on UMD Box, a Dropbox-like application. Set up or use your account [here](#).

Department IT

Entomology's very own IT guy, [Greg Hess](#), and sender of hilarious emails, who will save your butt at least once during your graduate career. What with hardware malfunctions, regular phishing attempts, the wonky website, and occasional network outages, Greg is a busy guy – so reach out to him only if you really truly need his help.

Computer Help and Repairs

Greg Hess and/or the [Division of IT Help Desk](#) has an online service center and walk-in service in McKeldin Library. They can assist with diagnosing your computer problem, removing viruses and other malware, and installing software and offering software support, and repairs.

Other Campus Resources:

Human Resources, Earnings Statements, and Billing Statements

Monthly billing and salary statements Salary statements are available on [ARES](#) Human Resources website. For billing statements, go to the [Student Financial Services Page](#) and click 'View My ebill' If you have question or concerns regarding your billing statement, contact [Pam](#) in the Business Office and the Bursar's Office.

Library

The various UMD libraries have all of the library necessities: study spaces, printing, books, cafes. Whenever you need a book or specific paper you can [check the library website](#) and request it for free. The graduate writing center is in McKeldin Library, plus you can do specialty and poster printing. In the [University Research Commons](#), you'll find statistics consulting and the GIS and Spatial Data Center. There are discipline-specific [librarians](#), [and the Entomology specialist is the super helpful Jodi Coalter.](#)

Grad Student Legal Aid Office

Looking for information about immigration issues or a landlord dispute? There are free legal services available to grad students in STAMP via the [GLAO](#). They can help you with these issues and many others. They also offer notary services and host helpful workshops through the academic year.

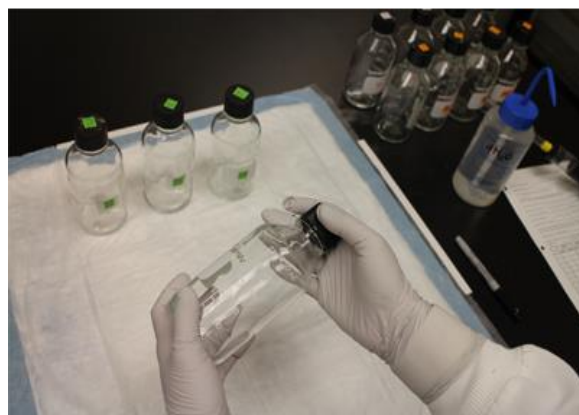
Shared lab space

The department has a shared lab on the 3rd Floor of Plant Sciences. This space requires swipe access (see [Eileen](#)), but otherwise equipment is available to department employees. [Todd Waters](#) manages the shared lab and can provide a complete list of supplies and equipment.

Safety & Well-being –

Lab Safety

Safety is of the utmost importance in the Department of Entomology at UMD. If you ever see an unsafe situation in a research space alert your advisor or any responsible party. There are several resources around campus to help ensure a safe laboratory environment.



Todd Waters monitors safety compliance, conducts lab safety inspections, and can answer any question you may have about lab safety. See his Laboratory Safety Training [guide](#). The Department of Environmental Safety, Sustainability, & Risk also outlines most lab safety procedures on their [website](#). If you have a grant from *NSF*, *NIH* and/or *USDA-NIFA*, you must take the online training for responsible conduct of research. This training may be done [online](#). Upon

completion of training, you must send proof (completion report) to [Eileen](#).

Because each lab encounters different risks, uses and stores different chemicals and reagents, and has different biohazard requirements, you should seek out a list of required trainings for your lab from your PI, lab manager, or a senior grad student. A [record of your compliance](#) is available on BioRaft.

If you do generate hazardous waste, contact Todd or fill out the regulated waste pick up form, under "forms" on this [ESSR webpage](#).

Field Safety

Field work is an important component of research for many of us. Be sure that you're aware of the risks related to your particular project, plus those inherent to outdoor work--poisonous plants, ticks, heat illness, dehydration, insecticide spray schedules, etc. There is also a driver acknowledgement form (see Eileen) for anyone who will drive university vehicles. If you work on university research farms, you may be required to do a WPS training.



Nite Ride

A free ride service (curb to curb) is available from 5:30pm-7:30am 7 days a week. The campus is generally safe, but incidents do happen. If you are thinking about walking around campus alone at night please consider giving [Nite Ride](#) a call at (301)314-NITE.



Autoclave

The autoclave requires swipe access, which can't be granted until you have in-person training. Here is Todd's [guide](#) to using the autoclave

Health Facilities

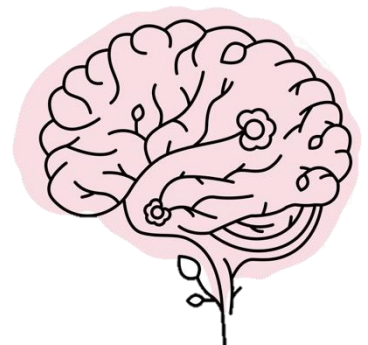
The UMD [Health Center](#) is available to students. It's across the street from the Stamp, and you can schedule an appointment on the website. Prescription refills, women's health, travel services, physical therapy, and primary care are just a few of the services offered by the Health Center.

Resources for Disability

We have a [mental health network](#) at UMD with diverse programs. Services include short term individual therapy, group therapy, medication evaluations, and suicide prevention programs. You can learn more about these [here](#). If you meet with [Simone Warrick-Bell](#), the graduate academic counselor [Counseling Center](#), she can also give recommendations for outside therapists based on location, accessibility, health insurance, and specialty – it may be easier for some folks than combing through your insurance's listings! There are also [student organizations](#) focused on wellness that you can check out!

Admittedly, many students have had to invest significant time and effort navigating ADS. If you are looking for advice on navigating these systems, building community, or anything else disability related, the following resources can be a great place to start:

- Resources for student employees with disabilities at UMD
 - This document was created by an Entomology graduate student, Lasair ni Choelain. It compiles UMD's existing resources, with some new ones that they created. Lasair has generously offered to serve as a point of contact for anyone seeking advice on navigating ADS.
- Accommodations How-To Guide
- Affinity group for employees with disabilities
 - This group is supported by Student Affairs and facilitated by Nancy Forsythe from Disability Inclusion and Lasair ni Choelain. To join the WhatsApp, email lasair@umd.edu.
- Graduate Students with Disabilities Advocacy Group
 - Facilitated by Lasair and other grad students across departments. To join the WhatsApp, email lasair@umd.edu.
- [President's Commission on Disability Issues Website](#)
- List-Servs to connect with the disability community on campus. Join by emailing directly or using Google Groups.
 - UMD-disability@umd.edu
 - pcdi-sac@umd.edu
 - disabilitysummit-mailing@umd.edu

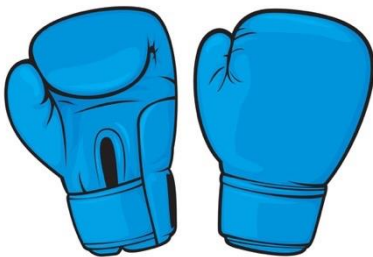


Fitness

UMD has four gyms that are available both for independent workouts and fitness classes – free of charge for UMD students. The school also has additional facilities that are only available for classes. The schedule for free fitness classes (e.g. Bodypump, Yoga, Cycling, Barre, Boxing, etc.) can be found [here](#). You might want to check out local hiking/biking trails, such as the [Paint Branch Trail](#) which runs through campus and conveniently connects to the metro!

Available fitness facilities include:

- Eppley Recreation Center
 - The largest gym, housing our Olympic size indoor and outdoor pools.
- School of Public Health
 - This smaller gym tends to be a bit quieter, making it a great destination for shy gym-goers
- Ritchie Colosseum
 - This gym is located on Baltimore Ave, near the McKeldin Mall.
- Severn Building Fitness Center
 - This little-known gym is located in Room 1309 of the Severn Building.
- Regents Drive Studios
 - These high-quality group-fitness studios are located under Regents Drive Garage.
- Reckord Armory
 - The armory is off Baltimore Ave and contains basketball and volleyball courts for intramural and independent student use.



Police and Emergencies

[Campus Police](#) are always available for both emergencies and non-emergencies. They offer a lost and found, fingerprinting, a 24-hour escort service, child safety seats, and more. It's important to recognize that many people are uncomfortable with police, often due to the institution's historic and ongoing mistreatment of many marginalized people, especially Black folks. Consider using [this flow chart](#) to decide if you need to police, or if another resource may be a better fit for your situation.

Life Around Campus –

Grocery

The closest western supermarkets are the Lidl on Baltimore Ave, the Whole Foods in Riverdale Park, the Safeway in Hyattsville, the Shoppers on Cherry Hill Rd, and a Giant on Greenbelt Road. There is also a Trader Joes in downtown College Park. [Patel Brothers](#) is a great South Asian market a ten minute drive from campus and [New Grand Mart](#) is a Latin and international market near Patel Brothers. For a dedicated East Asian market you have to go a bit further, with [H-mart](#) and [Lotte](#) in Wheaton, and [Great Wall](#) in Rockville. For organic food, there is a Mom's Organic Market on Rhode Island Ave and a YES! Organic Market on Baltimore Ave. [Greenbelt also has a CO-OP](#) with many local items. Also check out the [Glut co-op](#) in Mount Rainier!

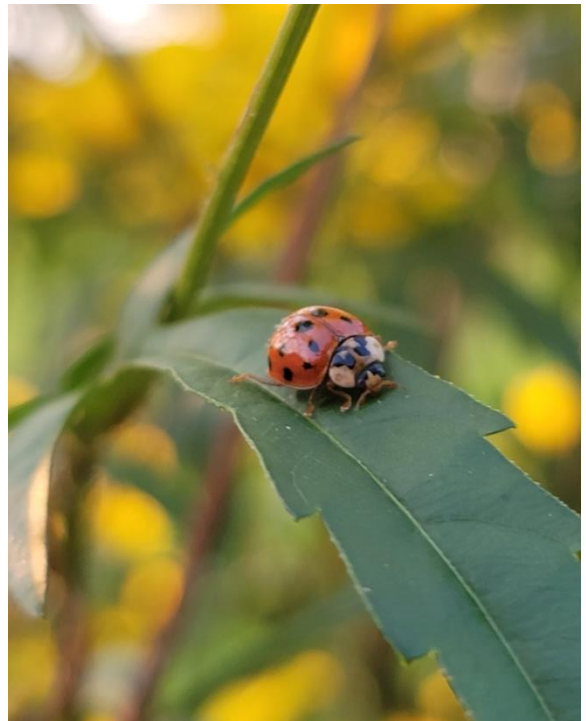
There are also Farmer's markets around! The closest include [UMD farmer's market](#) in front of the Tawes Fine Arts Building on Wednesdays, and the Greenbelt Farmers Market on Sundays. There is also one in [Riverdale Park](#) on Thursdays and one in [Takoma Park](#).

Liquor

In MD and VA, supermarkets are prohibited from selling alcohol, so you have to go to a liquor store (unless it's Shoppers in College Park or the YES! Organic Market, both of which sell wine and beer). The best in College Park is Village Pump Liquors on Greenbelt Rd. Just south of campus is The Market in Riverdale, which has a well curated variety of craft beers and affordable wine. If you're looking for quantity over quality and know someone with a Costco card, Costco in DC (but not Maryland) also sells liquor. Also, if you're in DC keep in mind that liquor is not sold after 10pm in supermarkets or liquor stores.

Food

- Stamp has the most food options in one place on campus. It has fast food stops including Starbucks, Panera, Chick-fil-a, Panda Express, and more.
- There are also grab and go options near PSLC:
 - o Starbucks cafés in Physical Sciences, ESJ, and HJP
 - o Stamp Convenience Shop
 - o Green Tidings Food Truck
- There are also *plenty* of restaurant options around College Park, Riverdale, and all over the DMV if you're willing to travel a bit farther – ask around the department for personalized recommendations!



Here are some of the current and past ESO's favorite spots:

Restaurants:

- Cedars of Lebanon
- New Deal Café in Greenbelt.
 - They have food, drinks, live music and events almost every evening!
- Board and Brew
 - reliable and fun place with good food, drinks, coffee, and - the main event - board games!
- Taqueria Habanero
 - Great "99% authentic" Mexican food and cocktails
- NuVegan Café
- Pizza – Blaze, Mod, Potomac, Pizzeria Paradiso
- Aroy thai
- Hanami Japanese
- Northwest Chinese
 - Try the hand-cut noodles!
- Pho Thom
- Shagga Ethiopian Cuisine
- Busboys and Poets



Bars:

- Town Center Market in Riverdale Park!
 - They are a chill bring-your-own-food bar with beer on tap and a liquor store. It is an entomology go-to spot!
- The Hall
 - A nice large space with many options of drinks and food
- Looneys
 - Looneys is a classic spot, largely for undergrads and local CP folks. It has cheap drinks and classic bar food.

Hiking and Nature

- Paint Branch hiking and biking trail
- Lake Artemisia near campus
- Greenbelt Park
- C&O canal / Billy Goat Trail
- Patuxent Research Refuge
- Great Falls National Park on the Potomac River
- Sugarloaf Mountain near Fredrick, MD
- Shenandoah National Park



Shops

- Clothes shopping: The closest shopping mall is Montgomery mall, but also there are also lots of fun options in DC, and some great local thrift shops.
 - o Thrifting: Value Village, Uptown Cheapskate, and lots more towards DC!
- Other shops:
 - o CP community gardens in Calvert Hills and Hollywood- contact the city office in the spring -- plots are \$30
 - o Smile Herb Shop - they sell plants in the spring, and tea, herbs, essential oils, etc, the rest of the year

Fun and Activities

- Trips to DC: Museums, restaurants, music venues, night life, etc!
- AFI Theater– a small theatre in Silver Spring, MD
- Baltimore Aquarium
- Professional and semi-professional sports of all types!
- Contra dancing to live music in Glen Echo Park
- MUCH MORE!!! Ask around the department! 😊



Transportation and Housing –

Buses and Shuttles

The [bus and shuttle system](#) is a convenient way to navigate within, to and from campus and they go to neighborhoods where students commonly live. University of Maryland [Transit app](#) tracks all the shuttles. Sign in with your UMD login to access UMD and add the shuttle system to access relevant information. Routes will change depending on timing: semester-long routes are different from the winter break and summertime routes. The timing of the bus routes changes throughout the day; in the morning they come more regularly than in the afternoon, and have a different schedule in the evening. There are some buses within the shuttle system that require UMD ID to ride, and these are marked as such on the schedule route page.

The Washington Metropolitan Area Transit Authority (WMATA) operates the regional MetroRail and MetroBus transit systems to connect students to locations through out Washington D.C. region. You can catch the MetroBus directly on campus – schedules and pick-up locations can be found [here](#). Buses take SmarTrip cards; pre-loaded \$10 SmartTrip cards can be purchased at The Stamp Ticket Office.

Metro

The College Park metro is only a short shuttle or bike ride away from campus. We're on the green/yellow line which can take you directly downtown in about 25 minutes. Check out this [map](#) to see the complete metro system or use Google maps transit option. To see when your train is coming in real time, use transit nerd's favorite app [MetroHero](#).

You will need a **SmarTrip card** to pay. You can add a virtual card to your phone's wallet app, or you can buy physical cards can be [online](#) or at a kiosk in the station. [Fares](#) change based on how far you ride and time of day, so you need to swipe into AND out of the stations.

If you regularly take the Metro or commute by Metro, you should look into SmarTrip benefits from the Department of Transportation Services. They'll allow you to set up regular pre-tax deductions from your paycheck that go directly to your SmarTrip card, saving you a little bit of money in the long run. (If you're funded through your own grant, this unfortunately won't apply to you.) Additionally, Metro offers a monthly pass based on the length of your commute which includes free bus rides and can be a really good deal.

Bikes are allowed on Metro trains, and College Park has a protected [bike and ride facility](#) where you can lock your bike up. There is also a Marc station at the College Park metro, which will take you to Baltimore. But be aware that trains only run during commuter hours Monday – Friday.



Biking



Depending on where you live, biking can be a convenient way to get around College Park and to/from campus. Bikes share the roads around campus, just be vigilant for drivers and use hand signals. There are uncovered bike racks in front of virtually every campus building. Bikes can get stolen, so purchase a lock, register your bike through [BikeUMD](#), and [lock your bike properly](#)! Some graduate students in the department bring their bikes into their offices or labs, but you can register in [Smart Commute](#) and have access to the parking area and showers in Regents Garage! UMD shuttle buses also have a front metal bike rack to carry your bike. The [Campus Bike Shop](#) offers free repair services for your bike and also offers daily, weekly, or semester long bike rentals. BikeUMD has developed an interactive [map](#) showing where covered bike racks, shower facilities, bike repair stations, and [local trails](#) are around campus.

Parking

Parking on campus is possible with a permit that links your license plate number to a specific lot on campus. You can [register](#) for parking and buy permits on the Department of Transportation Services (DOTS) website. The price is \$336 annually for commuter students. Registration opened July 29 for the 2020-2021 school year. Generally, permits are not too competitive and the SDG lot, lot 1, and lot 9 are the closest to Plant Sciences. In the summer, if you have a permit, you can park in any numbered lot.

Tickets for an expired meter are \$35 and tickets for parking in places you're not supposed to (like the Plant Sciences loading dock) are \$85. Please note that parking enforcement is relentless and unceasing, so follow all parking regulations. In most lots, parking is unrestricted after 4pm so you can park there no matter your permit status. You can only park overnight in numbered lots during the summers. Call the Office of

Transportation (301-314-PARK) if you are ever unsure of the parking regulations.

During football and basketball games DOTS makes people move their cars out of lots 9 and 11 by midnight and 5pm respectively. If you have a parking permit, you will be notified about this by e-mail, so keep an eye out for those. As a graduate student you can get a special permit that allows you to stay in your space during games. Bring your schedule of classes or a letter written by your advisor that states you have to stay in the lab past 5pm to the DOTS office in the basement of Regents before game day and you will not get ticketed. *

*See section 'Exemptions for Moving Vehicles for Sporting Events' at this [link](#) for the specifics to obtain this permit.

Parking is an ordeal, so here is the latest [48-page document](#) detailing all the aspects of parking, permits, fines and regulations of UMD DOTS.

Housing

Housing costs can vary considerably in the area, but tend to be on the high end. It takes some time, effort, and networking to find a great place. Some things to consider besides cost are safety, closeness (depending on your mode of transportation) and type (i.e., house, apartment, basement apartment, and shared or single). Grad students in our department tend to be dispersed through an ~30 minute radius. If you're looking for an apartment, it can range from \$900 and up/month depending on floor plan and number of roommates you might have. Houses can be more affordable but more variable in quality and availability. ENTM students have had great experiences in shared houses for closer to \$600/month. While many off-campus housing options may cater to undergrads, it is definitely possible to find quiet, affordable housing in CP You just need to seek out the right neighborhoods The university provides some [resources](#) to find [off campus housing](#) and potential roommates.

Campus-affiliated housing is available for graduate students in the [Graduate Hill and Graduate Gardens](#) apartment complexes. Using sites like Craigslist and Padmapper and even Facebook groups are alternative ways to find housing in the area that are not campus-affiliated. Students often appreciate the flexibility of being close to the metro system and UMD bus routes. If you are interested in finding roommates, you should consider sending an email to the ENTM and BEES students. Students have also had success in [cooperative housing](#). This is a great place to find community and affordable housing.

😊😊😊 THE END! 😊😊😊